





## 2009 in brief

# Ports of Stockholm

12.1 millions ferry and cruise passengers

7,5 million tonnes of goods and 30 000 TEU

673 million SEK turnover (approx. 68 million Euros)

215 employees





## Our objective

An attractive transport hub in the growing Baltic region

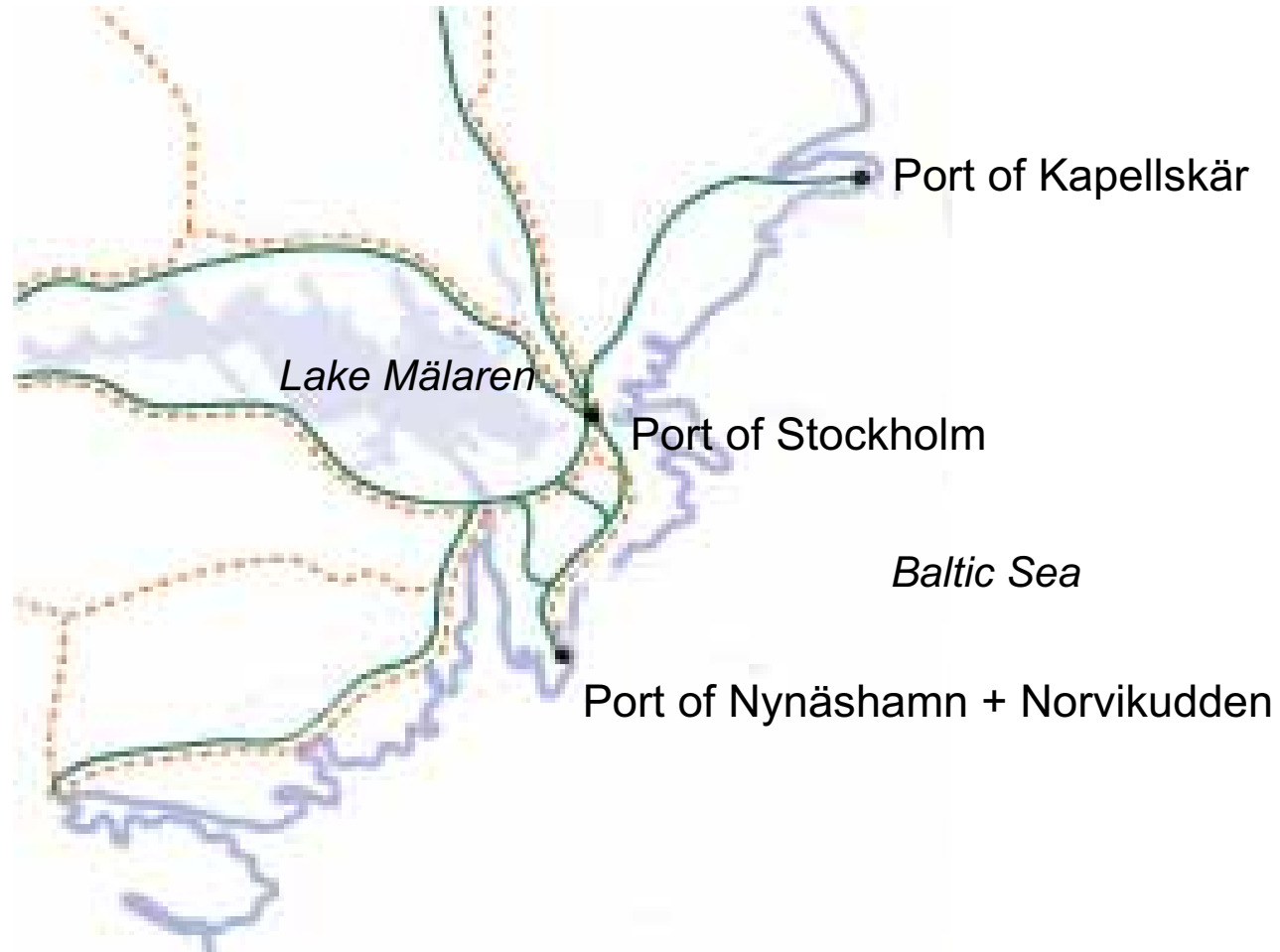
A modern and environmentally-friendly port

A growth engine of the Stockholm region





## Our ports





## Shipping transports growing more important

95% of Sweden's trade is carried out through shipping

Tough price competition on goods demand cost control

Container freight by sea is the most cost-efficient means of transportation and the most flexible carrier for far away goods

Today, a major share of the products consumed in the Stockholm region is loaded on to lorries from harbours located far away from the market and consumers





# Ports of Stockholm - A Green Model - Key factors

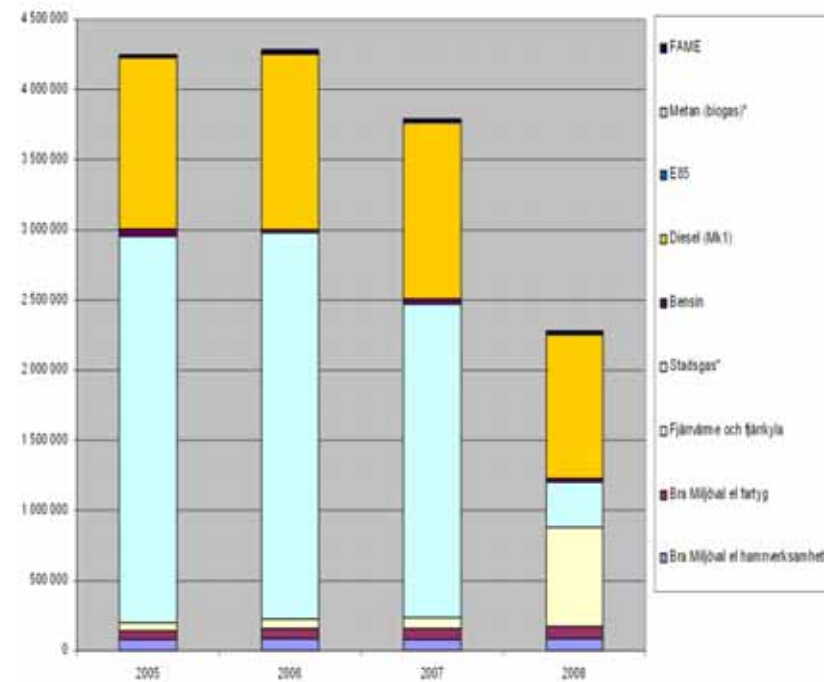
- Do your homework
- Cooperation
- Incentives change behavior
- Support international initiatives





## Do your homework

- Reduced CO2 emissions from port related activities by 45 % since 2005
- More effective house heating has reduced CO2 emissions AND heating costs





# Cooperation

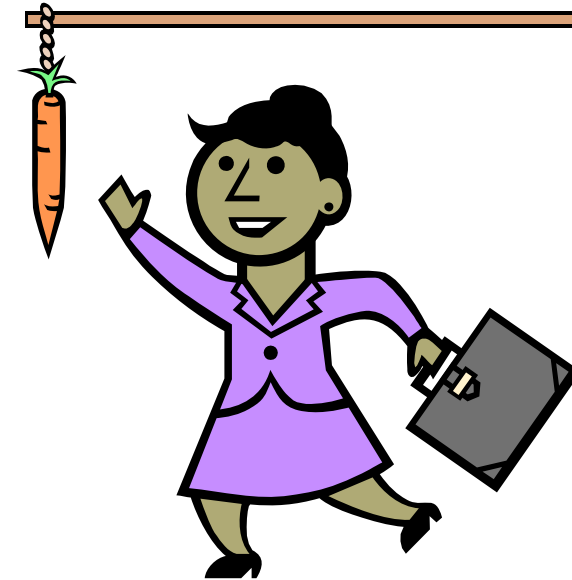
- Only by cooperation we can achieve the environmental goals we are reaching for
- Focusing on solutions and possibilities rather than on difficulties





## Incentives change behavior

- We created the possibilities of change by installing:
  - ✓ Shore-side electricity
  - ✓ Waste disposal centres
  - ✓ Facilities for receiving black and grey water from vessels
- Differentiated port fees encourage our customers
- The Environmental Buoy Diploma is a “seller”





## Support international initiatives

- The environment does not care about national borders
- Sustainable solutions require long-term agreements
- EU financed projects are tools – not goals





[www.stoports.com](http://www.stoports.com)